

espace **LOGGIA**

INNOVATION TO THE CONQUEST OF SPACE

Living space is becoming rare, we all know that and we are all looking for more.

espace Loggia was founded in the late 1970s by Mijanou Bardot, Brigitte Bardot's sister. The company introduced a range of innovative products, including the very first loft bed to be launched in France.

The concept behind the brand is: how to enable customers to take full advantage of the volume of a room, rather than being limited to the size of the floor space?

More creative than ever, **espace Loggia** presents the **Cosy lift**, a brand new version of the mobile bed with a design touch from the 50s.

Under the cautious eye of Guillaume Parent, the latest 2008/2009 collections are creating a break with a spirit of modernity toward a new design.

Cosy lift, design by Guillaume Parent

Like a perfectly designed furniture the **Cosy Lift** has pure shapes and proportions close to the '50s design touch.

We like to seek shelter in its intimate space. The **Cosy Lift** has a self-supported structure which means no fastening needed on any wall. **During the day**, the **Cosy Lift** is a very comfortable sofa with smart storages leant against the structure below a bookshelf. **At night**, it turns into a two people bedroom when the bed is lowered from the ceiling with a dedicated **espace Loggia** latch.

Note the slatted bed frame and the two shelves on each side. Space within space, the **Cosy Lift** perfectly fits into a loft, a studio flat or any apartment and house.

This version is displayed here in red lacquered wood, the sofa is in a lovely taupe material.

Dimension : Overall: 182x215, Bed: 140x190 (55x79 in). **Cosy lift** : £4 400, Sofa: £1 600.



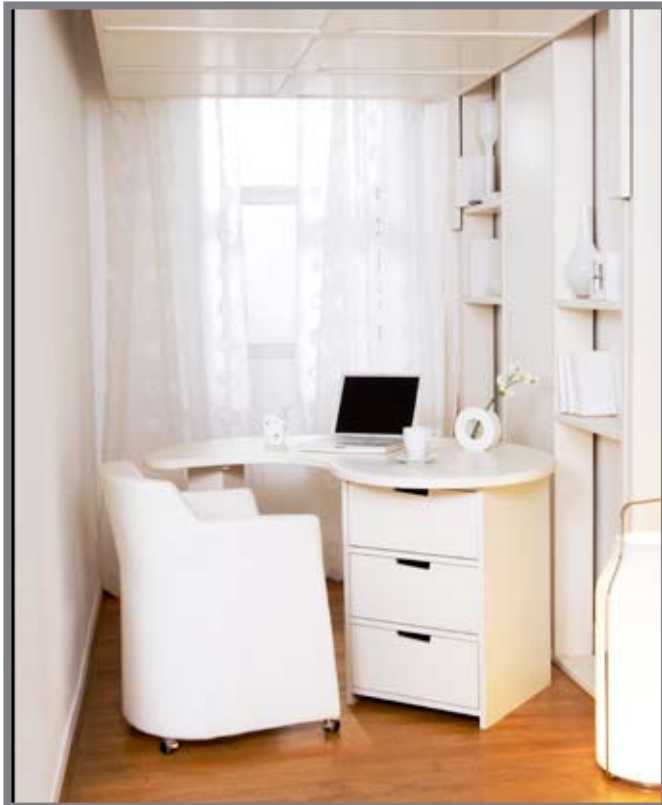
A wholly white mobile bed to furnish a tiny space

This new generation of wall bed frees up the volume of a room and creates space for all the required furnitures.

At night, the mobile bed is lowered to reveal a large, comfortable double bed. **During the day**, the bed is concealed under the ceiling making space for a bookshelf and a cosy working space. Hooked onto the wall or onto the ceiling, an **espace loggia** mobile bed effectively transforms a studio into a two- room place. The system exists in a manual version based on a counterweight and in an electric version.

Dimension : Overall 162x212, bed size 140x190cm.

Mobile Bed : from £ 2 558 plus VAT, excluding delivery and installation .



MOD loft bed, the modern loggia

Available in different wood species and many colors, the loft bed enable customers to furnish limited spaces and to free up extra floor space.

Shelves, desks, cupboards, stairs, sofas, wardrobes and Brick® storage – an entire range of modular and complementary accessories which brings a stylish touch to every mezzanine and makes each one more unique. Tailor-made from standard elements, a fitting by **espace Loggia** takes into account the space of the room and the occupants' lifestyle: each loft bed is unique and customized.

Dimension : 165x202, bed size : 150x200. (king size)

Mezzanine MOD : from £1 175



Programme GP design by Guillaume Parent

This modular and progressive concept, the **espace loggia's** spirit basis, enable a personal fitting. Three basic elements, a desk, many different shelves and a dresser, to compose the furniture needed to fit as much as possible your room with a bunch of storage places.

The Programme GP made of lacquered wood, is displayed here in Taupe & Ecrú, also available in 18 different colours.

GP cabinet with two low dressers and mixed shelves.

Dimension : 2,55 m - Price: £3382

GP Shelve, back and taupe, from 72 cm wide - £ 260



Portable Futons

Ideal for guests, the **espace loggia** futon is a small single transportable bedding. Decorative during the day, it becomes very handy at night. Exclusively made of cotton it exists in many different colours like : red, orange, almond green, grey, yellow and now taupe and linen.

Size: 70 x 190 - £150



Mezzanine «Jeune Urbaine» the progressive mezzanine for kids and teenagers

Playhouse or hideaway, **espace loggia's** «Jeune Urbaine» mezzanine grows up with the children.

Thank to its many different fitting possibilities, the mezzanine «Jeune urbaine», firstly created for the children, turns into a teenager living space in the course of time.

For the younger, a desk and a wardrobe are placed under the mezzanine. The style becomes more student **for a teenager** with a bigger desk below and a bigger wardrobe beside. Note the stairs made of programme Brick® drawers, giving an incredible storage place and space saving.

Three kind of mezzanine, according to the bedding width, available in 18 colours and 2 wood species Sea Pine and French Oak).

For the children: the mezzanine from £590, the desk from £75, the wardrobe from £490.

For the teenagers: the mezzanine from £590, the desk from £180, the wardrobe from £500. The Brick® staircase from £500.



Smart accessories for additional space !

Many different shelves came to fill the latest collection. They fit to every **espace loggia** loft bed.

Corner shelf :

gain more space on the outside. Ideal to place your reading!

Dimension : 45cm
from £125.

Bookcase shelf :

a large shelf which enable to be within reach of your favourite books.

Dimension : 80cm
from £70.

Breakfast shelf :

The essential ! The unstable shelf is over !

Dimension : 60cm
from £60

Headboard shelf

An incredible space saving, ideal to place a lamp.

Dimension : from 1meter
from £115.



October 2008

www.espace-loggia.com

Paris 7e : 92, rue du Bac Tél. 01 45 44 44 49 - M° Rue du Bac
Paris 5e : 30, Bd Saint-Germain Tél. 01 46 34 69 74 - M° Maubert
Paris 20e : 253, rue des Pyrénées - Tél. 01 40 33 91 90 - M° Gambetta
Paris 4e : Boutique espace loggia - BHV Rivoli 6e étage - M° Hôtel de Ville

Rosny-sous-Bois (93110) : Centre Commercial Domus – Tél. 01.48.55.11.98
Nice (06000) : 37, rue du Maréchal Joffre - Tél. 04 93 87 51 12
Parly 2 (78) : BHV Parly 2, boutique espace loggia au 2^{ème} étage.

www.espace-loggia.com

Paul Malignac - (+33) 66 77 02 166 – paul@espace-loggia.com